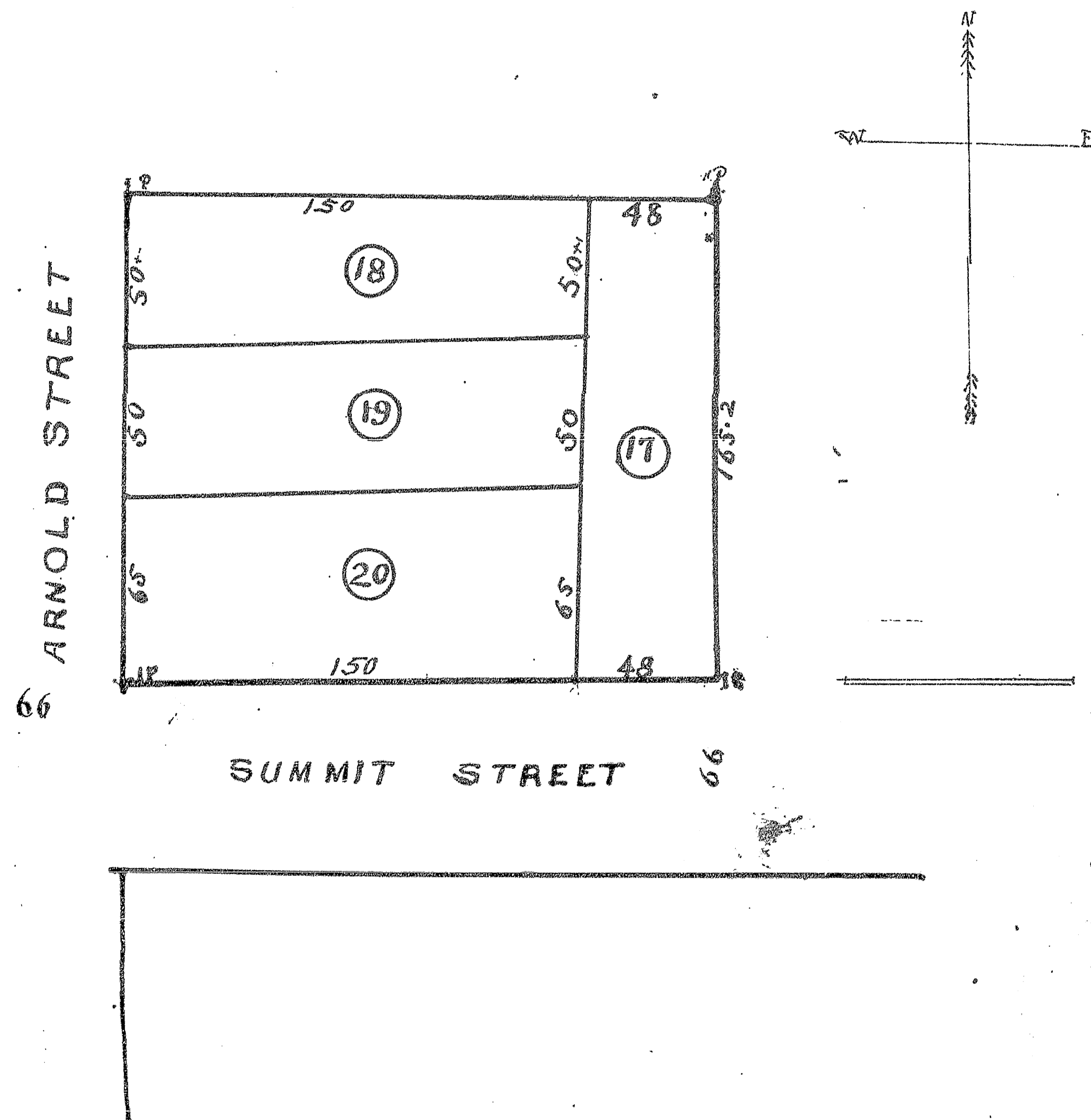


REVENUE PLAT 1912

OF

A RESUBDIVISION OF LOT ONE (1) BLOCK FOUR (4) OF SUMMIT ADDITION TO GALESAHRC KNOX COUNTY ILL. SITUATED IN THE SOUTHEAST QUARTER OF SECTION ELEVENTH (11) R. 1 E.



STATE OF ILLINOIS, } ss.

Knox County. I, C. S. RICHEY, County Surveyor of said Knox County, do hereby certify that the foregoing and annexed is a true and correct Plat and description of Land advertised for Survey and Platting by the County Clerk, as taken from the records of Knox County, and by measurements and survey, as provided for in Sections 62 and 63, Chapter 120, Revised Statutes of Illinois, 1903.

Dated this 26th day of JANUARY 1912

Approved by me, this 26th day of JANUARY 1912

C. S. Richey, County Surveyor.

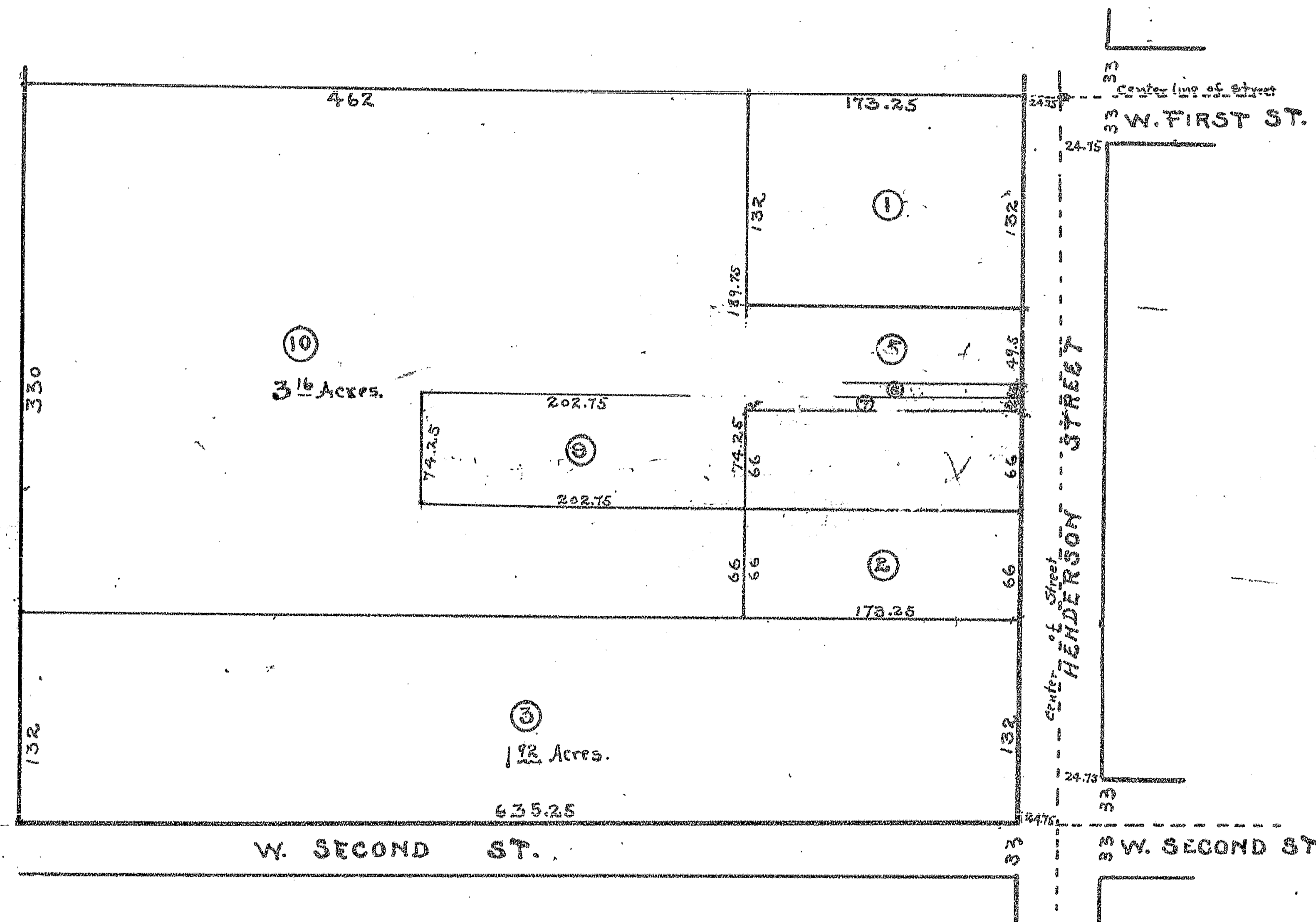
Frank L. Adams, County Clerk.

REVENUE PLAT 1913

OF

A RESUBDIVISION OF LOTS 1 AND 4 OF SUBDIVISION 1899 OF THE SOUTH EAST QUARTER OF SECTION 16 T. 11 N. R. 1 E. KNOX COUNTY ILL.

Scale 1 inch = 100 feet



STATE OF ILLINOIS, } ss.

Knox County. I, A. L. PICHEY, County Surveyor of said Knox County, do hereby certify that the foregoing and annexed is a true and correct Plat and description of Lands advertised for Survey and Platting by the County Clerk, as taken from the records of Knox County, and by measurements and survey, as provided for in Sections 62 and 63, Chapter 120, Revised Statutes of Illinois, 1903.

Dated this 15th day of May A. D. 1913

Approved by me, this 15th day of May A. D. 1913.

A. L. Pichey, County Surveyor.

Frank L. Adams, County Clerk.